

# Smart Projector for classroom



Model Name	EH600	EW600	EX600	EW800ST	EX800ST	
Display	Native Resolution	1920 x 1080 pixels, 1080p	1280 x 800 pixels, WXGA	1024 x 768 pixels, XGA	1280x800 pixels, WXGA	1024 x 768 pixels, XGA
	Brightness	3,500 Lumens	3,600 Lumens	3,600 Lumens	3,300 Lumens	3,300 Lumens
	Contrast Ratio*	20,000:1	20,000:1	20,000:1	20,000:1	20,000:1
	Display Color	1.07 Billion Colors	1.07 Billion Colors	1.07 Billion Colors	1.07 Billion Colors	1.07 Billion Colors
	Aspect Ratio	Native 16:9 (5 aspect ratio selectable)	Native 16:10 (5 aspect ratio selectable)	Native 4:3 (5 aspect ratio selectable)	Native 16:10 (5 aspect ratio selectable)	Native 4:3 (5 aspect ratio selectable)
	Light Source	Lamp 200W	Lamp 200W	Lamp 200W	Lamp 200W	Lamp 200W
Light Source Life*	Normal 5000 hrs; Economic 10000 hrs; SmartEco 10000 hrs; LampSave 15000 hrs	Normal 5000 hrs; Economic 10000 hrs; SmartEco 10000 hrs; LampSave 15000 hrs	Normal 5000 hrs; Economic 10000 hrs; SmartEco 10000 hrs; LampSave 15000 hrs	Normal 5000 hrs; Economic 10000 hrs; SmartEco 10000 hrs; LampSave 15000 hrs	Normal 5000 hrs; Economic 10000 hrs; SmartEco 10000 hrs; LampSave 15000 hrs	
	Throw Ratio	1.49~1.64	1.55~1.7	1.96~2.15	0.49	0.61
Optical	Zoom Ratio	1.1X	1.1X	1.1X	Fixed	Fixed
	Lens Control	Manual Focus	Manual Focus	Manual Focus	Manual Focus	Manual Focus
	Keystone Correction	1D, Vertical +/- 40 degrees	1D, Vertical +/- 40 degrees	1D, Vertical +/- 40 degrees	1D, Vertical ± 30 degrees	1D, Vertical ± 30 degrees
	Projection Offset	108±2.5%( Full-Height)	100±2.5%( Full-Height)	110±2.5%( Full-Height)	105±2.5%( Full-Height)	115±2.5%( Full-Height)
	Projection Size	60"~180"	60"~180"	60"~180"	70"~120"	60"~120"
Audio	Built-in Speaker	2W x1	2W x1	2W x1	2W x1	
Security	Security	Security Bar	Security Bar	Security Bar, Kensington anti-theft lock slot	Security Bar, Kensington anti-theft lock slot	
Connectivity	I/O Port	HDMI x1 PC (D-sub 15pin) x1 Monitor out (D-sub 15pin, Female) x1 Audio in (mini jack) x1 Audio out (mini jack) x1 RS232 In (D-sub 9pin, male) x1 USB Type A-1 x1 USB TypeA-2 (5V,1.5A) x1 USB Type A (For hidden wireless dongle) x1 USB Type mini B x1 IR Receiver (Front+Top) x2	HDMI x1 PC (D-sub 15pin) x1 Monitor out (D-sub 15pin, Female) x1 Audio in (mini jack) x1 Audio out (mini jack) x1 RS232 In (D-sub 9pin, male) x1 USB Type A-1 x1 USB TypeA-2 (5V,1.5A) x1 USB Type A (For hidden wireless dongle) x1 USB Type mini B x1 IR Receiver (Front+Top) x2	HDMI x1 PC (D-sub 15pin) x1 Monitor out (D-sub 15pin, Female) x1 Audio in (mini jack) x1 Audio out (mini jack) x1 RS232 In (D-sub 9pin, male) x1 USB Type A-1 x1 USB TypeA-2 (5V,1.5A) x1 USB Type A (For hidden wireless dongle) x1 USB Type mini B x1 IR Receiver (Front+Top) x2	HDMI x1 PC (D-sub 15pin) x1 Monitor out (D-sub 15pin, Female) x1 Audio in (mini jack) x1 Audio out (mini jack) x1 RS232 In (D-sub 9pin, male) x1 LAN Port(RJ45 for Network ) x1 USB TypeA-1x1 USB TypeA-2 (5V,1.5A) x1 USB Type mini B x1 IR Receiver (Front+Top) x2	HDMI x1 PC (D-sub 15pin) x1 Monitor out (D-sub 15pin, Female) x1 Audio in (mini jack) x1 Audio out (mini jack) x1 RS232 In (D-sub 9pin, male) x1 LAN Port (RJ45 for Network ) x1 USB TypeA-1x1 USB TypeA-2 (5V,1.5A) x1 USB Type mini B x1 IR Receiver (Front+Top) x2
	Smart System	OS System ROM/RAM	Android 6.0 16GB/2GB	Android 6.0 16GB/2GB	Android 6.0 16GB/2GB	Android 6.0 16GB/2GB
Wireless	Wireless	Dual Band 802.11ac/ b/g/n, 2.4G/5G	Dual Band 802.11ac/ b/g/n, 2.4G/5G	Dual Band 802.11ac/ b/g/n, 2.4G/5G	Dual Band 802.11ac/ b/g/n, 2.4G/5G	Dual Band 802.11ac/ b/g/n, 2.4G/5G
	Bluetooth	4.0	4.0	4.0	4.0	4.0
Compatibility	Resolution Support	VGA(640 x 480) to WUXGA_RB(1920 x 1200)	VGA(640 x 480) to WUXGA_RB(1920 x 1200)	VGA(640 x 480) to WUXGA_RB(1920 x 1200)	VGA(640 x 480) to WUXGA_RB(1920 x 1200)	VGA(640 x 480) to WUXGA_RB(1920 x 1200)
	HDTV Compatibility	480i, 480p, 576i, 567p, 720p, 1080i, 1080p	480i, 480p, 576i, 567p, 720p, 1080i, 1080p	480i, 480p, 576i, 567p, 720p, 1080i, 1080p	480i, 480p, 576i, 567p, 720p, 1080i, 1080p	480i, 480p, 576i, 567p, 720p, 1080i, 1080p
	Video Compatibility	NTSC, PAL, SECAM	NTSC, PAL, SECAM	NTSC, PAL, SECAM	NTSC, PAL, SECAM	NTSC, PAL, SECAM
Power	Power Consumptions (Max/Normal/Eco)	Max 320W, Normal 280 W, Eco 235 W.	Max 320W, Normal 280 W, Eco 235 W.	Max 320W, Normal 280 W, Eco 235 W.	Max 320W, Normal 280 W, Eco 235 W.	Max 320W, Normal 280 W, Eco 235 W.
	Standby Power consumption	Normal < 0.5W	Normal < 0.5W	Normal < 0.5W	Normal < 0.5Watts, Network < 2W.	Normal < 0.5Watts, Network < 2W.
	Power Supply	100 ~ 240V AC	100 ~ 240V AC	100 ~ 240V AC	100 ~ 240V AC	100 ~ 240V AC
Dimension and Weight	Product Dimensions (WxHxD)	296 x 120 x 232 mm	296 x 120 x 232 mm	296 x 120 x 232 mm	296 x 120 x 250 mm	296 x 120 x 250 mm
	Product Weight	2.5 Kg	2.5 Kg	2.5 Kg	2.6 Kg+/- 200g	2.6 Kg+/- 200g
Operation Condition	Noise Level (Normal/Eco)	33/29 dBA	33/29 dBA	33/29 dBA	33/29 dBA	33/29 dBA
Accessories	Accessories (Standard)	Wireless Dongle: WDR02U Power Cord (by region) Remote Control w/ Battery (RC1023) VGA cable Warranty Card (by region) QSG	Wireless Dongle: WDR02U Power Cord (by region) Remote Control w/ Battery (RC1023) VGA cable Warranty Card (by region) QSG	Wireless Dongle: WDR02U Power Cord (by region) Remote Control w/ Battery (RC1023) VGA cable Warranty Card (by region) QSG	Wireless Dongle: WDR02U Power Cord (by region) Remote Control w/ Battery (RC1023) VGA cable Warranty Card (by region) QSG	Wireless Dongle: WDR02U Power Cord (by region) Remote Control w/ Battery (RC1023) VGA cable Warranty Card (by region) QSG
	Accessories (Optional)	Spare Lamp Kit (5J.JLT05.001) 3D Glasses (5J.J9H25.002) Ceiling mount (5J.JAM10.001)	Spare Lamp Kit (5J.JLT05.001) 3D Glasses (5J.J9H25.002) Ceiling mount (5J.JAM10.001)	Spare Lamp Kit (5J.JLR05.001) 3D Glasses (5J.J9H25.002) Ceiling mount (5J.JAM10.001)	Spare Lamp Kit (5J.JLTO5.001) 3D Glasses (5J.J9H25.002) Wall mount (WM06G3)	Spare Lamp Kit (5J.JLTO5.001) 3D Glasses (5J.J9H25.002) Wall mount (WM06G3)
OSD	On Screen Display Language	Arabic/Bulgarian/ Croatian/ Czech/ Danish/ Dutch/ English/ Finnish/ French/ German/ Greek/ Hindi/ Hungarian/ Italian/ Indonesian/Japanese/ Korean/ Norwegian/ Polish/ Portuguese/ Romanian/ Russian/ Simplified Chinese/ Spanish/ Swedish/ Turkish/Thai/TraditionalChinese/Vietnamese /Farsi (30 Languages)				

Environment Notice  
 \* The Contrast is measure by Full On Full Off standard.  
 \* LightSource life results will vary depending on environmental conditions and usage. Actual product's features and specifications are subject to change without notice.  
 \* Storage: Temperature: -20~60°C; Humidity: 10~90%RH (without condensation)  
 \* Transmission quality depends on Wi-Fi environment and the screen mirroring compatibility of mobile devices from different brands.



# Smart Projector for Classroom

## Learning Without Boundaries



Wireless Accessibility

App Accessibility

Wireless Mirroring

Built-In Android System











## Smart Projector: Break away from outdated teaching methods

The World's First Smart Projector for Classroom with built-in internet connectivity and web browser, enables teachers to wirelessly access online teaching material without using a PC or laptop. With Smart Projector, schools can achieve smart and blended learning in the classroom, easily and intuitively.

### What you may encounter with your school projectors

-  Device and Cable Incompatibility
-  Must carry a USB flash for different classes
-  Complicated Set-up Menu
-  Slow when switching from one device to another
-  Difficult for IT department to centrally manage devices
-  Lack of convenient software to manage classroom projectors



Smart for Wireless Screen Sharing

### Wirelessly share your thoughts in one-click

Built to support laptops, tablets and smartphones, teachers and students can easily wirelessly share reports, ideas and presentation slides from their device to the Smart Projector in one-click. Make your lessons fully engaging and interactive!



Connect to a Smarter World

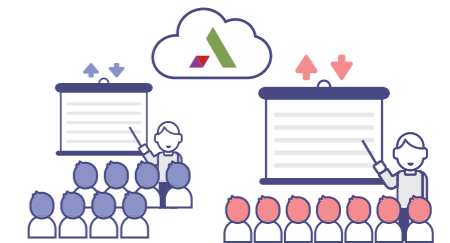
### A projector that lets you browse more

Unlike traditional projectors, Smart Projector for Classroom has a built-in Android system and web browser (Firefox), allowing teachers to instantly search for online teaching material in the classroom. Provide your students with a greater knowledge landscape, and move away from the wired solution.

Smart Access to Your Teaching Material in Any Classroom

### Once your cloud storage is linked, your teaching materials are at your fingertips

Designed to save teachers' time on gathering teaching material, teachers can call up their own tailor-made supporting content from the linked cloud storage accounts to Smart Projector using Account Management System app from their own tablet or smartphone. Same teaching content but available in different classrooms.



Smart School Message Delivery

### Empower your campus broadcasting system

X-Sign Broadcast – a wireless broadcasting system that helps schools deliver important school announcements in text, video or audio formats to dedicated or all classrooms instantly or within a timeline, complementing school's PA system.



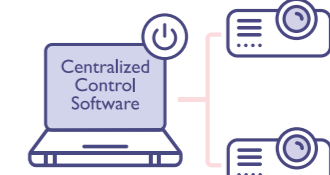
Image, Audio, Video files and Youtube videos



Document Files (PDF, PPT, EXCEL)



Support Stored Files on Cloud Storage



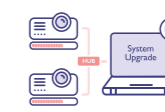
Smart Management

### Hassle-free device management

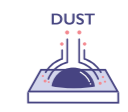
With the unique DMS Local (Device Management System) and MDA (Multiple Display Administrator), schools can easily centralize projector control via a local network so that your IT administrators can manage all projectors from one central location. With IP5X-certified dustproof technology, it prolongs projector lifespan against hair, dust, and other particulate matter.



Over-The-Air (OTA) Updates



System Updates via Lan



Anti-dust Accumulation Sensor



IP5X-Certified Dustproof Technology